

THE ROAD RUNNER

NORTH WEST
MISSOURI
MODEL 'A'
FORD CLUB



MAFCA charter MARC region
REGION

OFFICERS

PRESIDENT; John Osborn
VICE PRES; Lyman Ridgeway
SECRETARY; Barbara Anderson
TREASURER; Joy Osborn
ACTIVITIES; Terry Richardson
Tim Osborn
PUBLICATIONS; Bill Auch
CONCERNS; Dorothy Wantland
HISTORIAN; Marcia Auch

CLUB ACTIVITIES

JUNE 4TH Regular meeting to be held at the John & Billie Deal's place, regular time, desert to be furnished after the meeting.

JUNE 11-15th Regional meet at Wichita, those planning to drive will meet at the Junction of Hi way 152 and interstate 435 at 7:00am June 11th. this is going to be a great trip and fun.

JUNE 17TH LATRUP TRACTOR & CAR SHOW.

CORRECTIONS

LELAND DAISE ADDRESS 3317 SCOTT
RECTOR E.MAIL maryandrichard66@yahoo.com

DATES TO REMEMBER

July 21st Club Picnic at Smithville Lake, we have a shelter reserved.
DECEMBER 15th Clubs first Christmas Party

BIRTHDAYS AND ANNIVERSARY'S

JUNE 9TH SHERRY WINKINHOFFER
JUNE 20TH SHARON HESSEFORD
JUNE 26TH DENNIS HARTMAN

JUNE 3RD TIM & JOY OSBORN
JUNE 6TH LEE & SYLVIA DONIUS
BOB & GRACE SANSOM
TERRY & PEGGY

JUNE 7TH RICHARDSON
JUNE 13TH LARRY & MARILYN
JUNE 22ND JIM & MELISSA SPAWN

FOR SALE

It has been suggested that we have a space to advertise things we want to sell or purchase. Begining next issue if you want to utilize this space please have your items to the Publicatic Manage by the 15th of each month.

NEW MEMBERS

Arlo & Jeanne Hartman
715 Isley
Excelsior Springs, Mo. 64024
816 637 6541
Next time you meet them lets make them feel li member of the family.

BILL SAYS; IT IS TOUGH GETTING OLD, YOU FORGET DATES AND PLACES YOU FOR GET ZIP UP BUT WORST OF ALL WHEN YOU FOR C TO ZIP DOWN

ROAD RUNNER

SELL !! SELL!!

SELL !!!

SELL !! SELL!!

**SELL
SELL
SELL**



SELL !!!

**SELL
SELL
SELL**

THIS IS A SUPER WAY FOR THE CLUB TO MAKE SOME MONEY, IT ALL DEPENDS ON US, SO SELL SELL. IF YOU NEED TICKETS GET THEM FROM LYMAN RIDGEWAY. THANK YOU MARILYN AND LARRY FOR GIVING US THIS OPPORTUNITY.



THESE ARE PICTURES OF THE LAWRENCE SWAP MEET, WHAT A BEAUTIFUL DISPLAY, THE BEST IN THE ENTIRE MEET, WHILE OTHERS WERE BEING PULLED OUT OF THE MUD WE WERE HIGH AND DRY ON BLACK TOP, THANKS TO GOOD OLD JOHN. A BIG THANKS TO THOSE WHO DONATED AND A SUPER BIG TO THOSE WHO WORKED. THE LEFT OVER PARTS ARE BEING STORED, THANKS TO TERRY, AND WE WILL HAVE A BOOTH IN THE SHRINER'S SWAP MEET SOMETIME IN AUGUST. A FULL ACCOUNTING OF WHAT WE NETTED WILL BE GIVEN AT THE NEXT CLUB MEETING.

HERE'S MY CARD

A directory of service professionals

Serving
Northwest Missouri Model 'A' Ford Club

Purchase Your Parts From The Following Vendors



DON'S SERVICE

ALIGN BORING • BABBITING
BORING • MILLING • SLEEVING
VALVE SEATS

DON LOBNER
441-4649

26412 W. 87TH STREET
LENEXA, KS 68227

1008 BACK ACRE CIRCLE
MOUNT AIRY, MO 21771



ORDER # 800 255-11

FAX # 800 774-1928
(U.S. and Canada Only)

Information #: (301) 405-4
Online for #: (301) 405-4

- Our catalog contains over 3,200 Model A parts, each with a FULL description and illustration.
- Many full page schematic drawings to help identify parts and assembly sequences.
- Supplying quality by using over 90% U.S. made parts.
- Serving the Model A restorer with quality parts since 1977.

Send for a FREE 194 page illustrated
Model A catalog

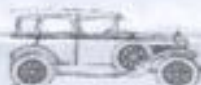
Web: www.brattons.com

E-mail: ModelAorders@brattons.com

ZANE'S ANTIQUE CARS & PARTS



2008 Leland Way
Salina, KS 67401
(785) 827-6312



"A" REPAIR SHOP

BOB HESS

12731 CHERRY STREET, KANSAS CITY 64145
816-941-4101 Cell: 816-668-3902

SERVICE - REPAIRS - UPGRADES AND COMPLETE RESTORATION
OVER 20 YEARS EXPERIENCE - MAFCO CERTIFIED MASTER JUDGE

COMPLETE LINE OF NEW & USED "A" PARTS



Mike's "A" Ford-Able Parts

Specializing in Model "A" Ford Parts 1928 - 1931



MIKE BUTCHER

Have an "A" Day!



706-652-3866

Fax 706-652-2492

888-879-6433

124 Model A Drive
Maysville, GA 30558

E-Mail: mike@mikes-afordable.com

Shop on the WEB at: www.mikes-afordable.com



MILTON HESSEF

816-229-11

CELL 816-590-4

MILT'S MODEL 'A' REPAIR

205 NE HEARNES AVE
BLUE SPRINGS MO 64014

NEW AND USED ANTIQUE PARTS
6 OR 12 VOLT ALTERNATORS & STARTERS
OVERDRIVE TRANSMISSIONS INSTALLED
4-SPEED TRANSMISSIONS INSTALLED
OTHER WORK BY REQUEST