



# The ROAD RUNNER



MAFCA Chapter MAFCA "Newsletter of the Year 2019", MARC "Newsletter Highest Achievement Award 2023 MARC Region"

## Officers

President:	Bill Skaggs
Vice President:	Chuck Haber
Secretary:	Terry Richardson
Treasurer:	Gary Dixon
Activities/Tours:	Chili Canida
Technical:	Tony Flieg
Ladies Activities:	Loura Talley
Concerns/Calling:	Jody Layne
Membership/Public Relations:	Myron Schmitt
Newsletter/Webmaster:	Sherry Winkinhofer
Property:	Vacant
Director:	Larry Harding
Director:	Mike Owen

## Birthdays

Sandy Skaggs	08/01	George Shadley	08/13
Nelson Young	08/06	Liz Miller	08/14
Terry Richardson	08/07	Les Gust	08/29
Levi Kelly	08/08	Mary Lou Matteson	08/31
Etta Ridgeway	08/09		

## Anniversaries

Nelson & Lanell Young	08/04
Ray & Linda Thompson	08/13
John & Janice Harmon	08/20

## Monthly Meeting

### **August 5th**

American Legion, 2607 NW State Route 92  
Smithville, MO 64089

The Legion provides a dinner menu at a special price  
one hour prior to the 7:00 PM meeting.

## Board Meeting

### **August 15th**

The 3rd Thursday of each month,  
7:00 PM, Woodneath Library Center  
8900 NE Flintlock Rd, Kansas City, MO 64157  
Visitors welcome

## Technical Meeting & Breakfast Club-KC

Big Biscuit in Liberty

Please join us every Wednesday 6:30 am to "whenever"  
at the Liberty Corner Shopping Center, at 840 Hwy 291  
(816-429-5314)

## Technical Meeting & Breakfast Club-St Joe

Every Monday 7:00-10:00 AM

Hy-Vee 201 North Belt Highway, St. Joseph

## Ice Cream & Socializing

Every Saturday evening 6:00 PM  
Big Burger, 4700 NE Vivion Rd  
Kansas City, Mo. 64119

## President's Comments:

It's been an unseasonable wet and/or hot summer, but we've still managed to get out in our cars, using reasonable precautions. July's tours and parades were well attended!

This month, we hope that our twice-rescheduled visit to Whiteman Air Force Base can finally happen. It's scheduled for August 8th; see the calendar for details. Remember, this is an event that you had to sign up in advance for since every visitor to the base has to have a background check done in advance. That said, for those that submitted their info, we hope it is all worth it to get to see those planes! Not to mention, the rest of the trip will include some interesting historical sites and museums as well! If the weather stays too hot, modern cars are welcome! Our Model A's will not be able to enter the base, but the other sites would be great photo ops if you do drive your "A"!

You might have noticed that we have not yet had our annual picnic. That is because the summers have been so hot that the Board decided to try scheduling it in September this year. Final plans will be included in the September Road Runner.

Bill Skaggs, President

*"People who wonder whether the glass is half empty or half full are missing the point. The glass is refillable."*

## Editor's Comments:

It's been a frustrating Model A year for me and The Old Lady. I was unable to visit Shawnee Town 1929 Museum in June and was really looking forward to my days scheduled in their July Time Travelers program. The Old Lady was running around like a top, and then two days before traveling time, she stopped running. Doggone it! Part of the problem was human error, and part was defective equipment. I had a young man helping me switch out carbs and trying to figure out why she was running a little rough. A few glitches to work through, and we thought we had her purring, but then, when we stopped for the afternoon to let the weather cool off, the key got left on, and when we went back out to the garage, the battery was dead. Oops!

So onto the charge it went, but it just wouldn't charge up. The charging unit showed it charging and then fully charged, but it would crank once or twice and then not anymore. I finally wised up, and after watching a Paul Shinn video, I ordered a new charger that he recommended. When it came in, I put it on the car, and in a little over an hour, the battery was back to fully charged, and The Old Lady was ready to go. And the old charger was in the trash can. Sadly, it was too late to make the trip to Shawnee, but at least she is back on the road! Oh the joys of a Model A owner!

Happy A'ing!

Sherry Wink, Editor

# NORTHWEST MO. MODEL A FORD CLUB MEETING

## American Legion Hall Smithville, Missouri

### July 1, 2024

Bill Skaggs called the meeting to order at 7:05 pm with the Pledge of Allegiance.

Our featured speaker was Trent Skaggs, who talked about conversational AI on your computer. There is always a lot of new information to learn as computers continue to evolve and change.

Minutes for June were approved as printed in the July newsletter.

Gary Dixon provided the updated Treasurer's report. Actual figures were not available in time to include in this issue.

A request was made for assistance from members for the raffle.

Members updates: Fran and Harley Wahl are now at Oak Pointe of Kearney; their new address is 200 Meadowbrook DR, Kearney MO 64060. Also keep in your thoughts Walt & Mary Ann Jones, Sharon Kiehl, and also Chili Canida, who is scheduled for back surgery soon.

Membership/Public Relations: Myron Schmitt announced that there were 31 members present. There are two new members, Bill and Susan Schubert, who have a 1929 Roadster and live in Lawson, MO.

Directors had nothing to report.

Meeting adjourned at 8:00 pm

Submitted by Terry Richardson, Secretary

---

## MAFFI MINUTE

Well, the MARC National Meet in Asheville will be over by the time you read this, and I'm hoping the MAFCA folks who were unable to have their meet because of wild fires got to join in the MARC meet. And, I'm really hoping you ALL get to Hickory Corners, Michigan –September 20 and 21 for Model A Days.

This year will be like no other . . . the commercial bus that so many have worked on and supported with donations is scheduled to be unveiled on September 20! And if that isn't enough excitement, the addition to the museum should be underway. We are literally just waiting for the proper permits to break ground!

We'll have all the usual fun in addition to the bus and expansion to view: the "first" start, museum cars, personal Model A's, Model A gifts, seminars, music, swap meet items, and more!

Did you get your "my A" plaque for the museum expansion yet (contact Val Maron at 847-951-5858 or email at [TheMyAProgram@gmail.com](mailto:TheMyAProgram@gmail.com)), so that you and your car can have your name on the wall as part of the fabulous museum? Is your wardrobe updated with attire from Model A T-shirts (go to [MAFFI.org](http://MAFFI.org) and click on "store"), and did you get your Sweepstakes ticket yet ([MAFFI.org](http://MAFFI.org)), so you have a chance at a historic Model A? So many ways to support your museum . . . There are fewer than 60 days until we all gather 'round to celebrate Model A Days!! I can't wait!

Cindy Ellenbecker, MAFFI Trustee/Secretary



---

## Win a Famous Model A!

Through the generosity of Donna Lewis, former MAFCA President and MAFFI Trustee, "Betsy," a 1930 Ford Model A Sport Coupe has been donated to help raise funds for the expansion of the beloved Model A Ford Museum. The car remains in the same condition as when it was restored by Red Grow in the 1950s. Enjoy driving "Betsy," your newest Model A, to your next cruise-in or car show. This is a truly historical vehicle, once owned by a MAFFI Hall of Fame inductee. "Betsy" became famous as the best Model A in the World. The Ford Model A has gathered 32 top place trophies in the 34 shows in which the car was entered. That includes two national shows in 1957 and 1962. Overall, the car won 39 trophies. It is said that Red Grow's car, "Betsy," was an inspiration at the time. It drove many people to do their best in restoring their own car. This urge to do the best restoration possible, developed the need for more information about how to do a better job. As a result, the Judging Standards evolved.

Now, you have a chance to own "Betsy" by entering a sweepstakes through the MAFFI website, <https://www.maffi.org/index.htm>, or by scanning the QR code to receive 20% more tickets for your donation!





**Activities**

"Departure places and times for events will be published on the Website and Newsletter the month prior to the event".

**August 14th-Ladies Luncheon**  
 Third Street Social Northland, at the old Metro North mall  
 All are welcome to attend  
 Contact Loura (816) 632-1776 (leave a message!)

**August 9th—Overnight to Jefferson City, Whiteman AFB**  
 Pre-Registration required  
 Check with Bill Skaggs (816) 807-6300  
 Leaving from Liberty Sutherlands Parking lot at 8:00 am sharp!

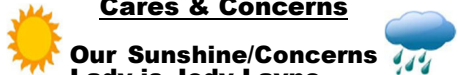
**If you are planning on joining in on any of the tours or activities, please sign-up and include your phone number, or you can contact Chili Canada at (816) 415-4948 (home phone) That way if an event has to be canceled, or has a location or schedule change, he will do his best to make sure you are notified!**

*IN your* — SHOP



*Efficient Workmanship or Hammer and Chisel Methods*

Ford Dealer educational literature in the July 1930 Ford Service Bulletin about how a Ford Garage should be run. Should I be concerned that the hammer and chisel method is more familiar to me when thinking about Model A repairs I've seen?

**Cares & Concerns** 

**Our Sunshine/Concerns Lady is Jody Layne.**  
**If you know of anyone that could use a call or a card, please let her know at 816-225-7680 or send her an email at jolayne60@yahoo.com**

**Club Contact Information:**  
 President Bill Skaggs (816) 807-6300  
 All Officers: nwmomodelafordclub@gmail.com  
 Publications: nwmomodelafordclub@gmail.com  
 or call 816-519-2630

---

*Any articles or notes without a byline are written by your editor.*

Visit [www.nwmomodela.com](http://www.nwmomodela.com) today!  
 Please mail any info, pictures, questions & suggestions to:  
**NWMO Model A Ford Club**  
**PO Box 514**  
**Liberty, MO 64069**  
 Or email:  
[nwmomodelafordclub@gmail.com](mailto:nwmomodelafordclub@gmail.com)

# Ladies Day Out Report

Loura Talley

We had a great turnout for our luncheon at Char Bar July 10th. It was a little hard to find, but we all made it. We had 4 brave husbands who came. Gary Smith won the men's door prize, and Jody won the women's prize. We had a "show and tell," and everyone shared their prized possessions and stories about the things they brought.

Julie Parnell invited everyone to come to her house and see her collections of antiques. We had two Model A's who braved the heat, and they were a hit with the crowd at the restaurant.

Our next outing will be on August 14th at Third Street Social Northland, at the old Metro North mall. It has rave reviews for their fried chicken. We'll have to check it out and give our opinions on it. We hope all the ladies will join in the fun!

Feel free to call me if you have questions: 816-632-1776. All suggestions are welcome and appreciated! Leave a message if I happen to be away from the phone.



The visit to Julie's home following the lunch was awesome with all her antique displays!



Several of the treasures brought in by Rosemary Smith.

Just Beautiful!



# Independence Day Parade in Parkville!

Photos by Mike Owen



## Women, Exercise and Workout Clothes

By Patricia Menz, Sacramento Capitol A's, Sacramento, CA

The perception of exercise for women changed dramatically during the 1920s. At the turn of the century the common thought was that a woman's body was not suited to strenuous exercise. Suggested activities included horseback riding (where the horse does all the work), walking, dancing, calisthenics, badminton, tennis and bicycling. Basketball was also played using modified rules. Although we still do these things today, early 20th century women were cautioned not to overdo strenuous activities that could cause physical strain or damage to their reproductive organs.

In 1900 one woman participated in the Olympics in a sailing competition. By 1924 more women were competing in other events, which caused many to re-evaluate the benefits of more strenuous activity.

The fashion styles of the era changed as well. The corseted figure was out and the long, sleek look was in. If a woman wanted to take advantage of corset-less fashions, her body needed to be sleek as well. Other than wearing a girdle, the only way to achieve a slender body was through exercise.



Girls Playing Basketball

The clothes worn for exercise evolved during the 1920s and 1930s. The Model A era is right in the middle of this transition. Acceptable clothing changed slowly, but not completely until the mid 1930s. The most common exercise attire for both girls and women were bloomers, a middy (sailor) blouse in long or short sleeves and black leggings. At the time there was no alternative clothing for more strenuous activity. However, women became more creative using what was available.

Wards were selling girls' and young women's gym suits as an alternative to bloomers and middy blouses. The gym suits were sleeveless, belted, one piece garments with elastic well. However, it wasn't until the early-to-mid 1930's that society as a whole accepted this new athletic wear as proper attire.



By 1934, bloomers and middy tops were mostly phased out. Change is a long and difficult process. There may have been a feeling that these clothes were for younger people and reminded many women of school gym classes from their past. The personal views of exercise for women needed to change first, they needed to want to embark on this new endeavor, and it is only then that the acceptance of new exercise clothing styles could follow behind it.



Gym wear continued to evolve as new fabrics and technologies became available. What we wear today is a far cry from what was worn 100 years ago.

See the original article at [https://www.mafca.com/ef\\_articles.html](https://www.mafca.com/ef_articles.html)



The 1929 Wear-Ever Aluminum recipe booklet had a lot of yummy looking recipes in it. Of course the booklet was designed to promote the use of their aluminum cookware for all the recipes. This one used the steamer insert in the large pot, just one more accessory to sell!

### Steamed Graham Raisin Pudding

- 2 cups graham flour
- 1/2 tsp soda
- 1/4 tsp baking powder
- 1 tsp cinnamon
- 1/2 tsp cloves
- 1/4 tsp allspice
- 1 cup raisins
- 1/2 cup sour milk
- 1/2 molasses
- 1 egg
- 1/4 cup shortening

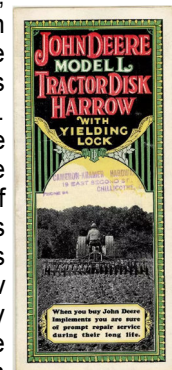
Mix all the dry ingredients together and add the raisins, sour milk, molasses, beaten egg and melted shortening. Turn into greased cups and steam for about 45 minutes, using steamer basket.



### Brands We Still Know

John Deere was born and lived in Vermont, working as a blacksmith. He moved to Illinois in 1836 at the age of 32 to open a new business. He soon realized that the traditional cast iron plows worked very poorly in the sticky soil of the area. Deere reasoned that a highly polished surface would solve the problem and made a prototype from a broken steel sawblade. Hundreds of farmers are said to have showed up to watch his new plow in use for the first time, and his business promptly became a "self-scouring" plow manufacturing company. The tradition of only making plows upon order was determined to be too slow to meet the demand, so Deere focused on making the plows as quickly as possible, trusting them to sell once made. The new practice worked, and the company sold over 100 plows in 1842 and over 400 the year after that. In 1848, the company moved to Moline, Illinois, and by 1849, production reached over 200 plows per month. By the 1850s, the company had expanded to make other farm equipment, including wagons, planters, and cultivators. In 1912, the company entered the tractor market, eventually buying out the Waterloo Gasoline Engine Company in 1918. The tractors were sold under that name until 1923, when the John Deere Model D was introduced. The first John Deere-branded gasoline harvester was sold in 1927.

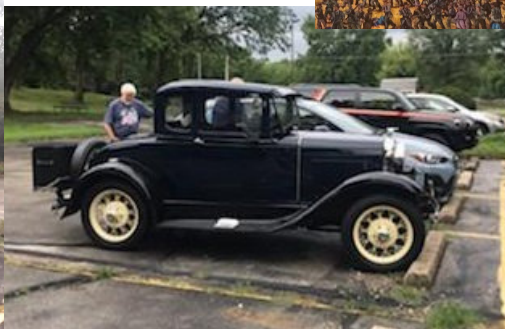
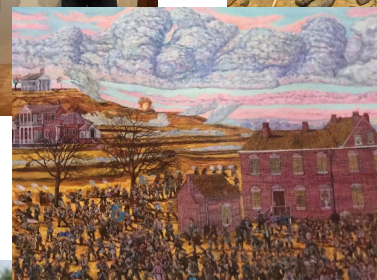
By Sherry Wink



1931 Advertising Brochure

# Lexington Tour June 29th.

It was a beautiful day for a tour to Lexington. The visit to the Anderson House, a Civil War Era mansion that was surrounded by a battlefield during a 3-day battle in 1861, was educational and interesting, as was the visit to the Battle of Lexington State Historic Site Visitor's Center. Model A's, modern cars, and even a hotrod all joined in the fun.



## Model A Mystery Part

### **What is it?**

Do you know?

For "Bragging Rights", Send an email to [nwmodelafordclub@gmail.com](mailto:nwmodelafordclub@gmail.com)  
Or to Sherry Winkinhofer  
PO Box 172, Table Rock NE 68447



Photo courtesy of Snyder's  
Antique Auto Parts

### Last Month's Mystery Part

This is a seat pivot stud for a Tudor Sedan.

Did you know?!



Photo courtesy of Bratton's  
Antique Auto Parts

## Tony's Tech Tips

Tony Flieg, Tech Director

## Jim's Tech Tips (from MAFCA)

From Jim Cannon

### **Difficult Steering**

Many Model A owners find their car hard to steer when parking or maneuvering at low speed. After you confirm that there is oil in the steering gear box (not grease), the tires are all inflated to 35 psi, and everything on the front axle has been properly greased, you are left with the most likely cause: The spindle bolt (kingpin) "thrust bearings" are defective or they are not shimmed up properly to support the weight of the car. You can confirm this by using a floor jack to take some weight off of the front wheels and then see if the steering effort is drastically reduced. If it is, the problem is the bearings.

To correct this, you need to remove everything from the spindles to get to the kingpins and remove them. See Les Andrews' Red Book, starting on page 1-209, for directions. The illustration below comes from later in that section.

Clean the thrust bearing and replace it if it does not turn smoothly or shows any signs of wear. Pack the bearing with grease before reinstalling.

When reassembling, you need to test fit the spindle with the kingpin fully locked in place with the locking pin. Temporarily leave the large felt seal and metal washer off the bottom of the spindle for this.

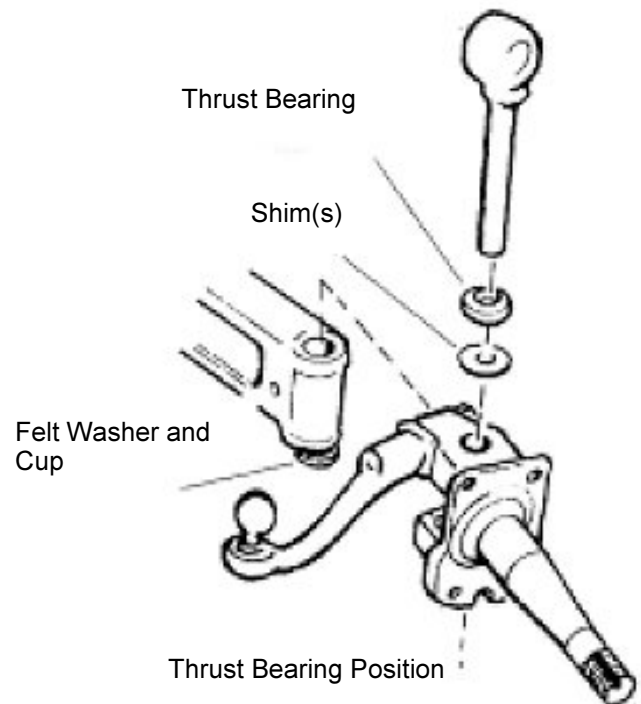
Start with the number of shims previously used, then add 1 shim at a time until very little or no vertical movement of the spindle is felt on the kingpin. It can take up to 4 shims to compensate for wear.

At some point, adding a shim may jam up the spindle, making it hard to turn on the kingpin. If it does, take that last shim out, reassemble, and confirm that the spindle again moves easily, as it should.

Now reassemble the spindle on the axle with the felt seal and the cupped metal washer installed between the axle and the bottom part of the spindle (the metal cup touches the axle, the felt touches the spindle).

The added thickness of the felt seal may temporarily make the spindle a bit stiff when turning on the kingpin, but it will quickly flatten out and move smoothly when you drive.

Now reinstall everything that attaches to the spindle, install the brakes; maybe use this as an opportunity to clean and repack the wheel bearings, then install the drums and the wheels. Grease all of the fittings well. Go for a test drive, enjoy the easier steering, and Have a Model A Day!



Jim



## Getting the Younger Generations Into the Model A Hobby

— by Troy Dalsing

I received an email from club member Greg Foster, age 90, stating he wanted to donate his two Model As to be given to younger generations. I immediately picked up the phone and called Greg to discuss. Greg stated "It just feels like it is the right thing to do. Something inside of me wants this to happen". Greg told me that it would be ideal if someone age 25 or younger were able to get these cars back on the road with the support of a mentor and the club. We planned for me to visit him to look at the cars and get a better understanding of exactly how he wanted to accomplish this. On June 20th, I sent an email out to all club members relaying the availability of the cars and the need to identify kids, grand kids, family members or community youth as a potential recipients of these cars. Much to my surprise, the response was not what I had hoped for. We had only one potential youth identified.



We met in the early morning of Monday July 1st when I got my first look at his cars and detailed his desire to make the donation. The cars are a 1930 Red Tudor and a late 1931 maroon Tudor. They both need some work to get them safely back on the road, but I am sure we , as a club can make it happen.

After we agreed that I would make his wish a reality, plans were made to pick up the cars that coming weekend. Kalei volunteered to help as one of the cars would be going to his great grandson, Diego. We utilized the infamous tow bar to haul the red 30 to his granddaughter's home where he stores his own Model A. Unfortunately, Diego was away on vacation and unable to join us. We returned the next day to pick up the 31 which we towed to Rock Hill and safely stored it in Don Houser's shop. Thanks Don!!!

We will still have the 31 Tudor to find a home for. During the MARC national meet in Asheville club meeting, I discussed in more detail the remaining car and the wishes of Greg Porter. Since then, we have two additional youth with a mentor that have stepped up. If there are other potential youth out there that meet the requirements, please let me know as soon as possible.

During our club meeting on August 19th, we will take all identified youth which meet the requirements and have a drawing to determine the winner.

In speaking for the entire Queen City Model A Club, I wish to thank Greg Porter for his generous donation and assure him the club will help to make his wish a reality. Thank you Greg!!!

One last thought. I talked with Bob Moore, president of MAYRA (Model A Youth Restoration Award) recently explaining this situation and my concern with the Model A hobby dying a slow death due to aging out. He told me a story/comment he had heard.

**"If you are a Model A hobbyist and you have more than one (most of us do), consider giving away one of them to younger generations."**

What an excellent way to keep the hobby going and create the fire/love of the hobby with the younger generations. I like to add a little more to the statement above. Please consider giving away a car to families in their 30's-40's. We all know how hard it is when you have a family to justify spending money on a car. If they could receive a car for free, imagine the joy they could have in joining club tours or just throwing the kids in for a ride to the ice cream store.

The giggles from the little ones in the back seat or rumble seat is intoxicating.



**For Sale / Wanted To place an ad send your information to swinkinhofer @Hotmail.com, or mail to Sherry Winkinhofer**

**As a service to our members, the area Model A clubs have decided to share our classified ads sections! (this will include Model A specific items only.) Ads will run approximately 3 months unless we are notified that the item is still available.**

**For Sale:** Stand for Model "A" motor plus many options. Has wheels, place for an air compressor, air tank. Big-stand! Take a look at: 5605 NE 6th, Des Moines

**Contact:** Pat Sumpter 515-262-6194 (CIMA 7/24)

*Your Ad Could Be Here!*

**For Sale:** rebuilt model A engine. All new parts from Snyder's. Engine is assembled except for the head to allow view of cylinders and to hoist it. Following are all new pistons and rings, valves, valve springs, valve guides, head studs, two piece front pulley and nut, adjustable tappets. Poured and line bored, crank journals turned 10 thousandths, block and head have been milled. . Assembled with new gaskets and can be turned over with a craftsman breaker bar. Head is an original head in excellent condition. Block was pressure tested in October '23 with no cracks. \$2,850.00 Will hoist into your vehicle for transport.

**Contact:** Ed 785-690-7170 Eudora ,KS. (POA 45/24)

**Wanted:** 1928-29 complete radiator suitable for re-coring, in fair condition.

**Contact:** Ken Coleman 913-481-6654 call or text. (POA 5/24)

**Wanted:** A late 1927 Model A Ford crank A-17036 with FORD script on the middle (angle) bar, 11/16" lug nut socket, 8 inch throw-offset, 90 degree pin position.

**Contact:** Bill Nitschke Cell (914)-323-8958

*Found in the Ford Service Bulletin September-October 1931*

## MOUNTING EXTRA REAR LAMP

In some sections there is a general trend towards the use of an extra rear lamp on the R. H. fender in addition to standard equipment. This additional rear lamp affords an exceptional opportunity to the dealer to increase rear lamp and bulb sales.

The additional rear lamp is easily installed. The correct method of installation is shown in Fig. 1237. It is very important that all connection be soldered and taped so there will not be any possibility of flickering occurring as a result of poor connections.

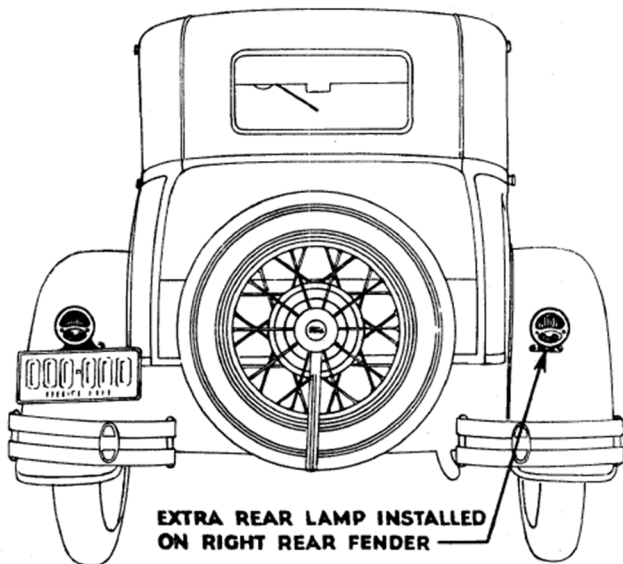


Fig. 1238

# The NEW Model A Days

Presenting Two Special Events\*

Celebrating  
The  
Model A Bus

## The Model A Driving Experience & The Unveiling of the 31-AA Bus

### Friday & Saturday September 20-21 2024




MODEL A DAYS SEPTEMBER 20-21, 2024 LOCATED ON THE GILMORE CAMPUS,  
6865 W. HICKORY RD. HICKORY CORNERS MI. 49009

For event Info & seminars 615-604-7423. Katie Herrick  
Swap Reservations and information Mark Maron 847-302-7900

\*Requires PRE-Registration

Dedicated to the restoration  
and preservation of the  
Ford Model A

7:00 PM Meeting  
First Monday of each Month  
(except December)  
at the American Legion  
2607 MO-92 (92 Hwy & DD)  
Smithville Missouri

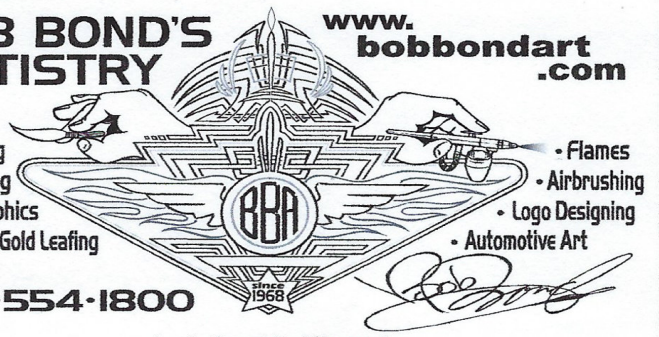
nwmomodela.com  
Find us on Facebook too!



# BOB BOND'S ARTISTRY

www.  
bobbondart  
.com

- Pinstriping
- Lettering
- Graphics
- Gold Leafing



816-554-1800

Lee's Summit, Missouri

## Best Battery

# RANDY BEST



1112 Swift  
N Kansas City MO 64116

816-741-7816  
C: 816-260-4329

randy.bestbattery@gmail.com  
www.bestbatterieskc.com

# BRATTON'S

## ANTIQUe AUTO PARTS



800-255-1929 Phone  
www.brattons.com

800-774-1930 Fax  
1606 Back Acre Circle  
Mount Airy, MD 21771

Your source for Quality Model A Ford Parts since 1976

Tom Kautz  
Owner

www.tomkautz.com

# KAUTZ

Established 1916



Electric  
Auto Parts  
Auto Glass

Rebuilding Starters, Generators, and Alternators  
6volt - 12 volt

920 Commercial St.  
Atchison, KS 66002

Phone: (913) 367-1717

ERIC WENINGER  
OWNER

2045 S BEDFORD ST  
WICHITA, KS 67207

316-619-1821 CELL  
316-685-2553 SHOP

www.modelmedic.com  
modelamedicllc@sbcglobal.net

# THE MODEL A MEDIC<sup>llc</sup>



STOCKING A FULL LINE OF  
NEW AND USED MODEL A FORD PARTS

SPECIALIZING IN FULL SERVICE REPAIRS,  
ENGINE, DRIVE TRAIN, AND RESTORATION

## THE WORLD'S LARGEST SUPPLIER OF 1909-31 FORD PARTS!

We Feature American Made Parts



12925 Woodworth Road ◊ New Springfield, OH 44443

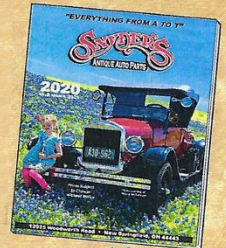
Toll Free Ordering:

# (888) 262-5712

On-Line Ordering:

snydersantiqueauto.com

New Products Added Daily!



FREE  
Fully Illustrated  
CATALOG  
U.S. ONLY



Commercial advertising space is available for \$25 per year  
for a business card size space (approximately 2 x 4) or \$50  
per year for a quarter page (approximately 4 x 4). These ads  
are also included on our website at [www.nwmomodela.com](http://www.nwmomodela.com)  
For more info, contact us at  
[nwmomodelafordclub@gmail.com](mailto:nwmomodelafordclub@gmail.com)

**-Membership is Strongly Encouraged in Both of these Excellent National Organizations-**



**Model A Ford Club of America**

**Join on line at *MAFCA.COM***

**~Membership Benefits~**

The Restorer magazine • Technical Support • Local Chapters • National Meets • Era Fashion Guidelines  
 • "How to Restore Series • Judging Standards and Restoration Guidelines

Dues per year are

U.S. Membership- \$50

Canada/Mexico Membership - \$60

International Membership - \$70

*Make checks payable to Model A Ford Club of America*

**Optional Initiation Package  
For New Members Only**

1—Back issue of *The Restorer*

1—MAFCA Lapel Pin

1—MAFCA Decal

1 0 Name Badge

Only \$11 extra

**New Membership**

Name \_\_\_\_\_

Spouse's Name \_\_\_\_\_

Address \_\_\_\_\_

City \_\_\_\_\_

State \_\_\_\_\_ Zip \_\_\_\_\_

Country \_\_\_\_\_ Telephone \_\_\_\_\_

Permission to publish my telephone number in future Membership Rosters? Yes: \_\_\_ No: \_\_\_

Return this Form and Payment to

MAFCA

250 South Cypress • La Habra, CA 90631-5515

(562) 697-2712 Monday - Friday from 10AM



**Model "A" Restorers Club**

6721 Merriman Rd, Garden City MI 48135

(734) 427-9050 office

(734) 427-9054 fax

**Find Membership forms at <http://model-a-ford.org/>**

**Dues- New or Renewals ( ) US Membership \$50.00**

( ) US Air Mail \$62.00 ( ) Canada \$60.00 ( ) International 70.00

**New Members Only- Partial Membership:  
J/A, S/O & N/D issues only!**

( ) US Membership 26.00 ( ) US & Canada Air Mail \$36.00 ( ) International \$44.00

**IMPORTANT:**

**Make checks payable to Model "A" Restorers Club (M.A.R.C.)**

All Memberships from outside the U.S. are to be remitted by International Money Orders in U.S. Funds (drawn on U.S. Bank) or credit card. And a personal check drawn on U.S. bank (U.S. funds must be stamped on check.)

With your membership you will receive a club membership I.D. card and the *Model "A" News*, our BI-monthly club magazine. In addition, each member is entitled to a free 40 word classified ad in each issue of our international publication, the *Model "A" News* (A good source of parts and information you may need for your car).

Address: \_\_\_\_\_

City: \_\_\_\_\_ State: \_\_\_\_\_ Zip: \_\_\_\_\_

I give permission to publish my phone number in the future MARC Membership Rosters:

( ) Yes ( ) No Phone: \_\_\_\_\_

I give permission to publish my email in the future MARC Membership Rosters:

( ) Yes ( ) No Email: \_\_\_\_\_

**THE ROAD RUNNER**

% SHERRY WINKINHOFER

PO Box 172

Table Rock NE 68447