

# The ROAD RUNNER



MAFCA Charter

MAFCA "Newsletter of Distinction" 2018, MARC "Award of Excellence" 2018

MARC Region

## Officers

President:	Bill Matteson
Vice President:	Junior Blakley
Secretary:	Mary Lou Matteson
Treasurer:	Nelson Young
Activities/Tours :	Jody Layne
Technical	Walt Jones
Concerns/Calling	Etta Ridgeway
Membership/Public Relations:	Lonie Hank
Merchandising:	Mary Ann Jones
Raffle	Glenda Dunlop
Newsletter/Webmaster:	Sherry Winkinhofer
Property:	Steve Talley
Director:	Bill Skaggs
Director:	Loura Cook

## Birthdays

Judy Ishmael	09/04	Glenda Dunlop	09/21
Karen Haber	09/08	Lyman Ridgeway	09/25
Jody Layne	09/08	Delores Dahms	09/27
Amy Lang-Johnson	09/11	Frank Parnell	09/28
Jim Spawn	09/13	Shan Johnson	09/29
Max Stamp	09/20		

## Anniversaries

Eddie & Marilyn Griggs	09/03
Mike & Darla Hoskins	09/16
Tom & Sherri Stechmann	09/21
Raul & Jeannie Salmon	09/23
Chili & Linda Canida	09/29

## Monthly Meeting

**\*\*\*September 9, 2019\*\*\***

**(1 week later due to Labor Day)**

6:00 PM dinner available at special price, 7:00 PM meeting  
The American Legion, 92 Hwy & DD, Smithville MO

## Board Meeting

**September 19, 2019**

The 3rd Thursday of each month,  
7:00 PM, Woodneath Library Center  
8900 NE Flintlock Rd, Kansas City, MO 64157

## Technical Meeting & Breakfast Club-KC

**Big Biscuit in Liberty**

Please join us every Wednesday 7:00 am to "whenever"  
at the Liberty Corner Shopping Center, at 840 Hwy 291  
(816-429-5314)

## Technical Meeting & Breakfast Club-St Joe

Every Monday 8:00-10:00 AM  
Hy-Vee 201 North Belt Highway, St. Joseph

## Ice Cream & Socializing

Every Saturday evening 6:00 PM

**Big Burger, 4700 NE Vivion Rd**

**Kansas City, Mo. 64119**



## President's Comments:

During coming weeks Junior will be looking for a few good men --and women.

The time is near when you can serve your club by taking on that job you've always known you perfectly fit. You know the one, it's the leadership position that will be open as we transition toward 2020. Maybe you recall the bylaw changes you voted this past February. The idea was to make it easier to fill the jobs necessary to keep the club running smoothly. Just one year commitments to positions (unless you want to serve longer), more sharing of responsibilities, and more freedom in choosing jobs that fit your interests. Let's see if these changes make things easier. When Junior comes calling, why not say "sure, Junior, just tell me how I can help?"

A couple of good events coming in September. Jim Spawn has the Dustbowl Jamboree/Poker Run ready to go on September 7th. That will be a fun day. We want to have a good showing Sept. 21 at Riverstone Retirement Community as we stop by for a visit with our friend Bill Auch.

Reminder: the September member meeting is on September 9, not the 2nd, which is the Labor Day holiday. You'll be rested from vacation and ready to plunge into fall.

Bill Matteson, President

*"To succeed in life, you need three things: a wishbone, a backbone and a funny bone."*

## Editor's Comments:

Happy A'ing!

Autumn already! I can't believe how fast the year has flown by. There has been a lot of Model A stuff to participate in all summer, thanks to our Tour Director Jody. I hope you've had the opportunity to participate in most if not all of the great tours and events that she has worked hard on all year. But it's not over yet! Check out our calendar for the things going on in September!

The Old Lady is currently residing in Table Rock for the next month or so. The noise I was afraid was the engine getting bad actually seems to be an exhaust leak, so I drove her to Table Rock in time for my family reunion and the town fair. Drove her in the parade, with a bubble machine attached to the trunk. The kids loved that! My passenger was a cowboy with a bum leg who couldn't walk the parade but wanted to participate, so he helped me throw candy! I was followed by a barbershop octet who sang songs throughout the parade, and dodged bubbles! We had so much fun that when I finished and dropped off the cowboy, I grabbed a young friend that was wanting a ride, and we snuck back into the parade following what was supposed to be the last vehicle and drive the route again! The kids along the way didn't complain, hollering "here comes the bubble car again, yea!!!!" I had fun, and I think they did too!

Happy "A"ing

Sherry Wink, Editor

**NORTHWEST MO. MODEL A FORD CLUB MEETING**  
**American Legion Hall, Smithville, Mo.**  
**August 5, 2019 7:00 p.m.**

**Greeter:** Jody Layne.

**Meeting opening:** President Bill led the Pledge of Allegiance. Following the pledge, he introduced Cody Theisen, Smithville high school student and representative of the school's FFA Chapter. At the invitation of Bill Skaggs, Cody spoke briefly about the chapter's need for financial and sponsorship assistance from community organizations to help grow the FFA program. Following his comments, President Bill indicated Cody's request would be given further consideration by the club's board. Bill then introduced the Knobtown Skiffle Band. The band's unique oldtime music and style were enjoyed by all.

**Vice President:** Junior Blakely encouraged members to step up to fill open positions for the 2020 Board.

**Secretary Report:** There being no corrections, the July 1 minutes as printed in the August Road Runner, were declared approved by unanimous consent.

**Treasurer Report:** Opening Balance as of July 1, \$13,369.15; Income \$138.28; Expenses \$80.44; Ending Balance \$13,426.99 Motion to accept the Treasurers Report, by Lonie Hank, seconded by Jody Layne. Motion passed.

**Activities:** Jody reported upcoming activities: August 10, meet Platte City McDonalds, 10:00 a.m., for the Atchison Trolley Tour; September 7, Dustbowl Jamboree and Poker Run; September 21, Riverstone Retirement Community car day and Bill Auch visit. Tentative Dates: October 5, Gary and Rosie Smith's Cainsville car exhibit and wiener roast; October 19, Fall Foliage Tour; November 9, Ladies Social/Men's Garage Day at Layne's new Smithville residence.

**Membership:** Lonie reported 48 members and 3 guests in attendance.

**Merchandise:** Mary Anne is available to take orders for name tags as well as various Model A apparel.

**Concerns/Calling:** Sympathy cards were sent to Janice and John Harmon in the loss of Janice's mother, and to Nelson and Lanell Young in the loss of Nelson's brother. Get Well cards went to Joe Wishon and Bill Auch. August birthdays and anniversaries were noted by Etta. She suggested members send birthday greetings to Bill Auch in celebration of his 90th birthday, August 19.

**Other:** President Bill noted Bill Auch will be 90 on August 19, joining Andy Bennett in the club's honorary membership category. He thanked Laura Cook and Lyman Ridgeway for volunteering their Model A's for the August Ford Car Display at the KC Auto Museum. He reported the club's August annual report filing with the Missouri Secretary of State has been submitted by Treasurer Nelson. He reminded members that the September meeting will be a week later, Sept. 9, due to the Labor Day holiday.

**Raffle:** Ray Thompson was the lucky recipient of the raffle's \$25.00 gift certificate.

**Attendance:** 48 members, 3 guests.

Meeting Adjourned at 8:30 p.m. Respectfully submitted by Mary Lou Matteson.



Professor Walter Jones explains the fine points of Model A engine rods to a young visitor at our weekly Wednesday breakfast meeting in Liberty Missouri.

-photo by Jim Spawn

### Club Address

Please use the following address to all future mailings:

NWMO Model A Ford Club  
PO Box 34  
Liberty MO 64069

### MAFFI Newsletter Minute August 2019

Coffield Collection of Model "A" Advertisements

Al Coffield was an active member of the Model A Ford community in the Phoenix area. In addition to enjoying Model A cars, Al collected Model A era ads. He passed away in 1993 and in 1995 his estate donated a large collection of Model A era ads to MAFFI.

Most of the activity in the past years involving the Coffield Ad collection is connected with the use of the presentation seminar prepared by MAFFI and now being used by various clubs.

The program provides insight into the techniques used to promote sales of the Model A during its years of manufacture. MAFFI solicits additions to both the ad collection and the photograph collection from anyone who has examples that should be preserved and shared with other members of the hobby, present and future.

The collection contains over 600 magazine and newspaper ads, including many foreign ads. The typical ad in the collection shows the methods and techniques of Ford advertising and revealing those things which Ford considered to be important to car and truck buyers of that era. Member clubs have the opportunity to see a selection of these ads in color. MAFFI will provide a set of transparencies and a script. Your club need only provide an overhead projector and a screen. This program is also available on a DVD. Enjoy an evening of education and entertainment using copies of these original advertising pages.

Please contact the MAFFI office for scheduling: [ExecutiveDirector@maffi.org](mailto:ExecutiveDirector@maffi.org)

Thank you for your continued support of the Model A Ford Foundation by both item donation and monetary support.

Thank you, Marsha Quesnel, MAFFI Trustee, [clubcontact@maffi.org](mailto:clubcontact@maffi.org)



## Activities

"Departure places and times for events will be published on the Web Site and Newsletter the month prior to the event".

### September 7th—Dustbowl Jamboree

Details Below  
 jspawn321@aol.com  
 www.dustbowljamboree.net

**September 14th—International Model A Day**  
 No local club events planned, but a great day to drive your car and be seen!

### September 21—Bill Auch's Riverstone car event

9000 N. Congress Avenue, KCMO 64153  
 9:00 a.m. to 11:00 a.m.

### Save the Date—Plans Pending!

October 5th-Applefest Parade  
 October 5th-Trip To Smith's in Cainsville - tentative  
 October 19th-Fall Foliage Tour  
 November 9th-Ladies Social/Men's Garage Day  
 December 8th-Christmas Party

If you are planning on joining in on any of the tours or activities, please sign-up at the meeting or let Jody Layne know in advance at (816) 225-7680. That way if an event has to be canceled or has a location or the schedule changed, we will do our best to make sure you are notified!

### Next Meeting:

Jaci and Chadwick Oldham, metal detectors extraordinaire, will demonstrate how they find lost things, "one hole at a time."



It's almost time! Have you signed up for the Dust Bowl Jamboree yet? Good car fun, great music, what more can you ask for a great fall day!



Bill Auch turned 90, and his family helped him celebrate with a Birthday party at his retirement home. Bill is founding member of the club, and has contributed so much to the success of this wonderful organization! We all wish him a great big HAPPY BIRTHDAY!



# DUST BOWL JAMBOREE

September 7, 2019 – Parkville, Missouri

## Vintage Car Poker Run

Visit Five Platte County Parks  
 Departs at 12:00 p.m. – Returns to Parkville

Win \$500!  
 Enter On Site



## Dust Bowl Open Jam Session

English Landing Park— 1 p.m. – 2 p.m.

## Dust Bowl Jamboree Concert

English Landing Park – 2 p.m. – 5 p.m.



### Sunshine/Concerns (816) 719-9997

Etta Ridgeway is our Sunshine/Concerns lady! If you know anybody in need of a card or phone call, please let her know. And, if you just want to share the news of a happy event, such as a new grandbaby or a wedding, let her know that too!



### Deadline for the Next Road Runner

The 20<sup>th</sup> of the preceding month

Email to swinkinhofer@hotmail.com

Or mail to: Sherry Winkinhofer

1459 Woodland Ave

Liberty MO 64068

### Club Contact Information:

President Bill Matteson 816-781-4936

All Officers: nwmomodelaclub@gmail.com

Publications: nwmomodelaclub@gmail.com

816-519-2630

*Any articles or notes without a byline are written by your editor.*

Visit [www.nwmomodela.com](http://www.nwmomodela.com) today!

Please mail any info, pictures, questions & suggestions to:

**NWMO Model A Ford Club**

**PO Box 34**

**Liberty MO 64069**

Or email:

[nwmomodelaclub@gmail.com](mailto:nwmomodelaclub@gmail.com)

**Last Meeting**—The Knobtown Skiffle Band, entertainers with unlikely instruments, and unusual songs, set everyone’s toes a tappin!



**ZENITH SPEED HEAD**

85 Miles per Hour  
and More  
for  
Ford Models T or A  
and Chevrolet Motors

Racing and Aviation suits, wire wheels, tires, goggles and everything pertaining to racing cars.

Rajo, “Fronty” Heads and Parts

Get our big discount sheet.  
Genuine Zenith Replacement Head of all Chevrolets.

**ZENITH MANUFACTURING CO.**  
NORTH MILWAUKEE, WISCONSIN

Even when it was new, the racing fanatics were working on making it better! This is an ad found in the January 1929 issue “Automobile Digest.”

## MAFFI Bus Project

From the MAFCA website

Did you know that MAFFI is working on the restoration of a Model AA bus? The bus was donated by Ken and Helen Ehrenhofer in the hopes that the bus can be restored and then used at the Model A Museum to give visitors a ride around the grounds. It’s the same model of bus that’s used in Greenfield Village.

To keep up with the Bus Project, you can visit the MAFFI web site and also subscribe to the monthly newsletter This project is being coordinated for the Model A Ford Foundation by MAFFI Trustee Ross Milne. The restoration itself is being organized and managed by Ken Ehrenhofer. For more information and to learn where you can help, contact Ken, 630.697.3906 and Ross, 905.455.6615.



## MARC Has Partnered with NAPA



Receive a 10% discount off your purchase. Another great advantage to being a MARC member! We are excited to announce MARC has partnered with NAPA to bring you additional savings to help you get and stay on the road with a little extra in your pocket. To participate in this program, simply download the AITA app from your App Store, you will be prompted to create an account with your email and a password. Bring your phone with your AITA app to your local NAPA store, be prepared with your MARC membership number. There are no membership cards for this program.

## The Model A Youth Restoration Awards

**GET THE WORD OUT**—Every two years since 1994, the Model A Youth Restoration Awards (MAYRA) program gives financial assistance to youth who are restoring a Model A. They must be between ages 12 and less than 22 when the awards are announced. Every applicant who meets the award requirements will receive the same amount. In 2018, nine youth each received \$2,200 in financial support.

If you know of a youth who is working on a Model A, please tell him or her about the program. All the details are on the website – [www.modelarestorationaward.org](http://www.modelarestorationaward.org). The deadline for filing for a 2020 award is May 31, 2020.

MAYRA’s guiding philosophy is that the future of the hobby rests with instilling an interest and love for the Model A in youth. Once that interest takes hold, the youth is more likely to stick with the hobby or rekindle the interest in the hobby at a later point in life. And being successful in the restoration often depends on finances and that is MAYRA helps. The program requires just two things, youth and donations.

Youth – If you know of someone, please tell them.

Donations – The program is funded with donations from Model A clubs, the national organizations of the MAFFCA and the MARC, Model A parts and services vendors, individuals and memorials.

We are a 501 (c) 3 educational organization. Thanks for your help. Send your donation to: MAYRA, 13478 Egbert Street, Sylmar, CA 91342. For more info, call Bob Moore 626-358-2027 or go to our website: [www.modelarestorationaward.org](http://www.modelarestorationaward.org)

Two of the 2018 Award Recipients



Diesel Cook, 14, Temperance, MI

Brooke Lindsay, 14, Vancouver, WA

# Atchison Trolley Tour

By Sherry Wink  
Pictures by Bill Matteson, Jody Layne, and Jeanne Harding

The tour to Atchison was a huge success! The weather looked threatening but stayed rain-free for the duration of the trip. The tour included a ride on the trolley, with the accompanying history lesson, and a visit to interesting locations. A stop at the Santa Fe Depot and Atchison Railroad Museum led to some interesting pictures! But the stop to see the Lockheed Electra Model 10E owned by the Amelia Earhart Foundation was voted the best of the tour!

This plane, named "Muriel", is the sister ship to the "Lost Star" flown by Amelia on her final flight. This plane is the last surviving original model of its kind. It is not yet available to the public for viewing, but Jody was able to pull strings to get our group a private showing. All agreed it was a fascinating piece of history well worth the stop!

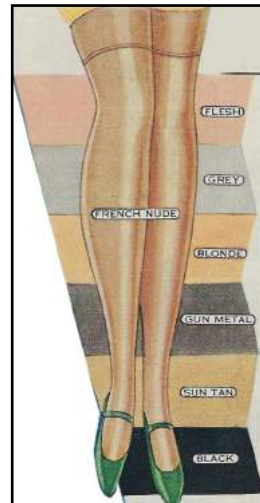


# Shades of Stockings

By Sherry Wink

Ever wonder what color your stockings should be when dressing Era Appropriate? Me too. And I've discovered that they weren't just all a boring shade of skin tone. Check out these catalog pages from the Robert Simpson Spring-Summer 1931 catalog. Gunmetal, black, and grey joined the normal skin tone range. The Autumn 1928 Goringes Catalog is in black and white, but lists hosiery being available in Grey Lilac, Grey Rose, Gunmetal, Mushroom, and Blue Fox, as well as Taupe, Beige, and Flesh. Quite a selection of colors!

Also of interest is the below color chart. Although it is from 1926, I'm sure fashion did not change so rapidly as to make it obsolete by Model A days. It's an interesting reference material to determine what color hosiery you can pair with your vintage outfits. One thing to note when you are trying to be authentic, all era hosiery had seams, and the seam color matched the stocking, it did not contrast.



This is from a 1931 cookbook titled "Coconut Dishes That Everybody Loves." I know that I would love this one, can't go wrong with caramel and coconut!

## Toasted Coconut Carmel Cake

- 3 cups sifted Swans Down Cake flour
- 1 1/2 tsp baking powder
- 2 egg yolks, well beaten
- 1/2 cup caramelized sugar syrup
- 2/3 cup water
- 2 egg whites, stiffly beaten
- 1/2 cup butter or shortening
- 1/2 tsp salt
- 1 cup sugar
- 1 tsp vanilla



## Caramelized Sugar Syrup

- 1 cup sugar
- 1/2 cup hot water

To make caramelized sugar syrup, melt 1 cup sugar over a low flame, stirring constantly, until straw-colored. Then add 1/2 cup hot water and stir until sugar lumps are dissolved. Allow to cool before using.

Sift flour once, measure, add baking powder and salt, and sift together three times. Cream butter thoroughly, add sugar gradually, and cream together until light and fluffy. Add egg yolks, then 1/2 cup caramelized sugar syrup. Add Flour, alternately with water, a small amount at a time. Beat after each addition until smooth; add vanilla. Fold in egg whites. Bake in two greased 9-inch layer pans in moderated oven (375° F) 30 minutes. Spread Seven minute frosting between layers and on top and sides of cake and sprinkle thickly with Baker's Coconut, Premium Shred, toasted.

## Brands We Still Know

DuPont was founded by Eleuthere Irenee du Pont in 1802 near Wilmington Delaware as a gunpowder manufacturing company. The business grew quite quickly, and was the largest gunpowder suppliers in the United States by the Civil War, supplying almost half of the gunpowder used. In 1902, three great-grandsons of the original founder bought out the business and began the expansion into other chemical substance such as lacquers, cellulose and other non-explosive products. 1914, DuPont invested in the automobile industry by buying General Motors stock. In 1920, General Motors became the number one automobile company in the world. DuPont is responsible for many new inventions throughout the years, including Neoprene (1930), Lucite (1931), Nylon (1935), Teflon (1945), Mylar (1950), Lycra (1959), and Kevlar (1971).



Interesting note: In 1910, DuPont published a brochure entitled "Farming with Dynamite", outlining the benefits of using dynamite on stumps and various other obstacles.

## Members Cars on Display

KC Auto Museum's August Ford Car Show highlights early Fords (Pre-WWII) and includes Model A's provided by club members Lyman Ridgway and Laura Cook. The museum is located at 15095 West 116th Street, Olathe, Kansas 66062. [kansascityautomuseum.com](http://kansascityautomuseum.com). Go check it out!



Found at [theoldmotor.com](http://theoldmotor.com)

## Wyn's Auto Supply: Depression Era Los Angeles Wrecking Yard

1932 was one of the toughest years of the Great Depression. New automobile sales had slowed to a mere trickle of the yearly sales figures established in the late-1920s. At the same time, a glut of leftover used cars from the same period threatened the sale of new models.

At the same time, there was money to be made by smart businesspeople with a large enough capital reserve, in the auto salvage and wrecking yard business. The greater Los Angeles area was an exuberant and free-wheeling metropolis during the "Roaring Twenties" leading up to "Black Tuesday," the day the Stock Market crashed on Oct. 24, 1929. Left behind in the wake of years of booming economic prosperity was an overly large supply of used cars and "junkers."

Note the progress a worker with a torch has made cutting a Model "T" Ford roadster pickup apart when compared with the lead photo.

When new car sales faltered, dealers and sales organizations eventually banded together around the country to ease the used car glut by scrapping as many of them as possible. "Junkies" would also scavenge the city looking for unwanted or abandoned cars, and the desperate, who had to sell their car to raise some cash.

This series of images was taken in 1932 at Wyn's Auto Supply, located at 640 East Slauson Ave. in an industrial section of Los Angeles. The pictures show some of the operations practiced in the auto salvage business at the time. Whole automobiles and trucks were subjected to the cutting torch, in the same way as a butcher uses a knife to reduce the vehicles into salable components and metal scrap.



Two views (above and below) of the metal shear used to reduce wheels and other components into pieces. Note the conveyor belt used for loading scrap into trucks and trailers.



A worker grinding the edges of recycled glass into panes used for replacement wind-wings visible on the left. Note the crude shop-made glass grinder with adjustable wooden shaft bearings.

# Model A Mystery Part

## What is it?

Do you know?

For "Bragging Rights", Send an email to [nwmomodelafordclub@gmail.com](mailto:nwmomodelafordclub@gmail.com)  
Or to NWMO Model A Ford Club  
Box 34, Liberty MO 64069



Photo courtesy of Mike's A-Fordable Antique Auto

## Last Month's Mystery

### Part

This is a Main Drive Gear Bearing Baffle. This is the larger of the two baffles.

Did you know?



Photo courtesy of Bratton's Antique Auto Parts

## Walt's Old Time Tech Tip

This article was originally printed in the 2nd Quarter 2019 edition of A-World, MAFCA's newsletter for Kids.

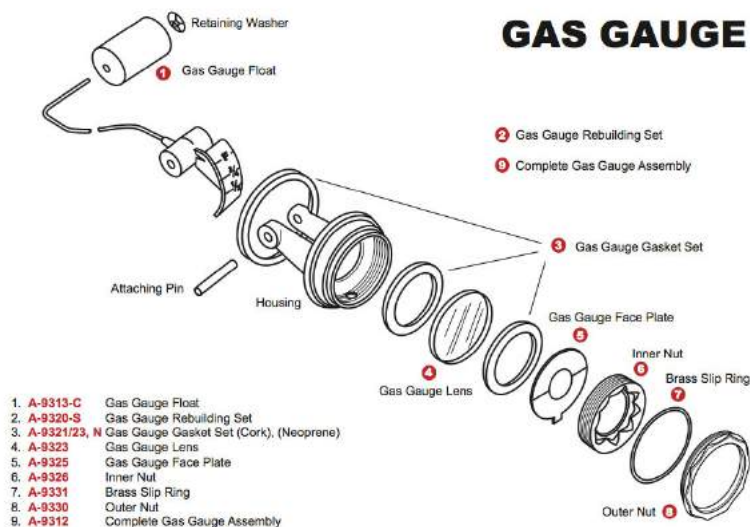
## The Model A Gas Gauge

By Sherry Wink

Have you looked closely at the Model A fuel gauge? Looks pretty simple, doesn't it? A little window with marking showing full, 3/4, half, etc. But what else do you know about it? Did you know that the fluid you see in the window is actually gas from the tank? And that the gauge is actually attached to a rod with a cork at the end of it that floats in the gas tank to move the gauge itself? And that there are numerous nuts, rings, lens, and gaskets involved in keeping the gas from leaking out? Check out the below diagram, there are over a dozen parts involved in this process of measuring the gas in your tank!



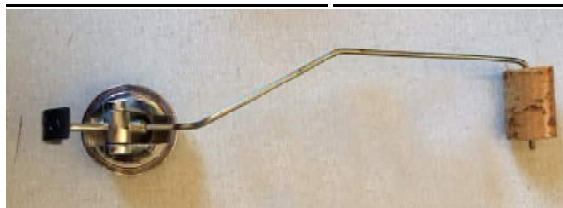
The gas gauge in your instrument panel



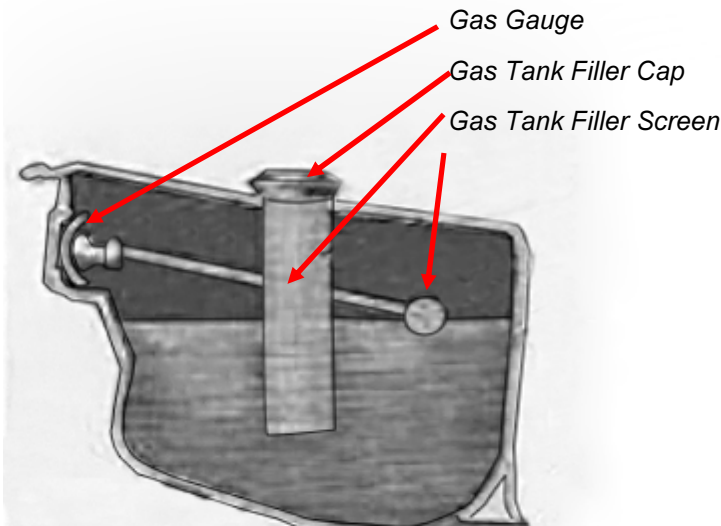
The part you see inside



The actual gauge



The rod and cork attached to the gauge



Model A gas gauges are made to show "E" for empty when there is still about a gallon of gas in the tank. If yours doesn't, you can adjust it! Here's an easy way to check it. First, remove the gas cap and the inner screen (if still there). Make a long wire hook by straightening out a coat hanger. Reach inside the tank, and hook the float wire and lift it up gently until it touches the top of the tank. Now have someone look at the gas gauge. If it shows "F", you're good! If not, use a yardstick to gently bend the float wire, until it matches. Careful now, little bends go a long way on the adjustments!





**For Sale / Wanted** To place an ad send your information to [swinkinhofer@Hotmail.com](mailto:swinkinhofer@Hotmail.com), or mail to Sherry Winkinhofer

As a service to our members, the area Model A clubs have decided to share our classified ads sections! (this will include Model A specific items only.) Ads will run approximately 3 months unless we are notified that the item is still available.

**Put your Ad Here!**

**For Sale:** 1929 Woody Wagon Fordor. \$17,500.  
**Contact** Sheryl Craft @ (956) 782-6441 (CIMA 05/2019)

**For Sale:** 1930 Model A Tudor, reasonable price, driver, good condition, located in Springdale AR.  
**Contact:** Bill Dewberry chevyman49@yahoo.com

**For Sale:** Model A Frame and Running gear  
**Contact:** Bob Reiter (816) 728-9139 (816) 628-5349 (NWMO 06/2019)

**For Sale:** 1931 Model A Tudor. Dual side-mounts, trunk, luggage rack and many more extras. Low mileage on complete restoration. Starts, runs and drives great!  
**Contact:** Ron Carson @ (816)261-7856 (NWMO 06/2019)

**For Sale:** 1931 Model A Rumble seat Coupe, 70-80,000 miles, Original Engine, New Tires, New Radiator, New Exhaust, \$16,500  
 Contact: Dan Turner (816) 632-3015 (NWMO 06/2019)

**For Sale:** 1930 Deluxe Coupe. Original. Runs and drives Great. New Brakes, Texas radiator and Transmission rebuilt in 2016. Will deliver from Texas and no additional cost. \$15,000.  
**Contact:** John Lang at jrlang@aetools. (CIMA 07/2019)

**For Sale:** 1928 Model A Ford Huckster \$13,000.  
**Contact:** Jim Lux 816 390 5090 mrjimlux@yahoo.com (NWMO 09/2019)



**For Sale:** 1928 Model A Fordor. Needs new windshield. Runs fine. \$12,000 O.B.O.  
**Contact:** Gordon Lewis @ (641) 990-1490 (CIMA 09/2019)

**For Sale:** Lost my garage, need to sell my five window six wheel 29 coupe, stone guard, Brassworks radiator, six volt alternator, leakless water pump, 500 miles on an inserted engine by Model A Medic of Wichita, Mitchell transmission, lightened flywheel with late Model P plate and clutch, B/W overdrive, Bonney interior, rumble seat. Runs great \$12,500.  
**Contact:** Bill Auch 816-510-1698 (NWMO 07/2019)

**For Sale:** 1929 Tudor. Restored in the '80's. Model B Wheels and Tires with Power Steering. \$12,000.  
**Contact:** Dan Miller @ (515) 250-3264. (CIMA 07/2019)

**For Sale:** 1931 Ford Model A Coupe Asking \$12,000. Dual sidemounted spares, no rumble seat. This car runs well, tires on ground in good shape. Interior rough in spots. Paint is needed on fenders. Car has new stone guard and original luggage rack. Five very good used white wall tires and tubes are included . **Contact:** Mike Cormack 785-841-6033 kstrunkguy@yahoo.com (POA 08/2019)

**For Sale:** 1929 Roadster. All original with new canvas top all fitted to windows. Green/yellow wheels No rust-super clean, \$12,000 obo.  
**Contact:** Richard Kern at 913-208-2449 (ICTA 09/2019)

**For Sale:** Grandpa's Garage - DeSoto, Kansas Dean Weller is listing most of his cars for sale, including: 4 Model T Fords, 9 Model A Fords, 3 Chevrolets, 2 Buicks, 2 Cadillacs, 1 Lincoln, 1 Edsel, 1 Crosley, 1 Dodge, 1 DeSoto, 1 Star, 1 Freeway. Please call for an appointment - Open Tuesday, Friday, and Saturday  
**Contact:** Dean Weller 913-585-3326/913-585-1313

**For Sale:** 1929 Model A Roadster Pickup. Has flathead V 8, synchronized transmission, hydraulic brakes, 16 inch radial tires. All steel body and fenders.  
**Contact:** Bill Skaggs 816 807 6300 (NWMO 09/2019)



**For Sale:** 1930 Model A Coupe with rumble seat. \$16,500. This was Lee Felsberg's vehicle.  
**Contact:** Randy Baker 816-261-2452 or Judy Baker 816-261-0018. (NWMO 09/2019)

**For Sale:** Multiple items:

**Spare Engine** built by Schwalm's Babbitted Bearings INC. Strasburg Pa. Reasonable offers considered.

**1931 Model A Rear End**—\$1000. All new brakes, Flat Head Ted brake adjusters, new brake drums, new lug bolts in the hubs and drums, has a Mitchell overdrive, lower driveshaft already installed, new outside axle hub bearings, original driveshaft comes with it. Rims are not included but are for sale

**Radiator shell**, webbing installed, but never used. Brand new from Classic Auto Parts. 1930. 1931 \$450.

**Contact:** John Osborn 816-809-5713 (NWMO 09/2019)



## Model A's in TV

Did you know that the Douglas' in the old sitcom "Green Acres" made their move in a Model A Truck?

Apparently, Oliver was quite the mechanic, able to tear that motor down right to the g

asket on the side of the road. Check out how he solved his head gasket problem with Lisa's famous hotcakes!



<https://www.youtube.com/watch?v=5ae4NDjHr4Y>



## RETIREMENT PLANNING – IS SOCIAL SECURITY ENOUGH FOR YOU?

While most of us realize the importance of retirement planning, sadly, it is something that many of us do not take seriously. Recent studies have shown that one in three Americans have no retirement saving and an additional 23% have less than \$10,000 in retirement savings. Only 53% of working Americans are covered by a retirement plan at work; 23% are covered by a pension and 40% have access to a retirement savings plan, such as a 401k. However, out of those 40%, only 44% actually take advantage of their retirement savings plan. The 47% of Americans not covered by a retirement plan at work have to take accountability of their retirement savings and, according to the studies, many simply do not.

Some people may simply think that they will live comfortably off their social security. Well, if you can maintain your lifestyle on the approximate 40% of their income that social security will likely replace, then you are correct! Frankly, I don't think many can. Plus, it is expected that without legislation, the Social Security Trust Fund will run out of money in 2034. At that time, benefits will have to be paid by the taxes paid by people in the workforce. With 10,000 baby boomers retiring per day, it is projected that these taxes will only support 79% of the benefits being paid. Which will lead to either reduced benefits, or more likely in my opinion, higher payroll taxes for employers and employees.

People often decide that they are going to draw social security as soon as they can, at 62. This is a decision not to be taken lightly. It first reduces your full retirement benefit by 26.67% for the rest of your life. It also reduces the amount your spouse can receive; if you hold off drawing social security until full retirement age (67 for those born in 1960 or later), the lower earning spouse is entitled to at least half of the benefit of the higher-earning spouse. Secondly, it limits the amount of additional income you can make to \$17,040 until you reach full retirement age. If you exceed that amount, \$1 of your social security benefit is taken away for every \$3 above the limit. It is quite likely that if you elect early retirement, you are quite likely exiting the work force in your peak earning years, potentially hindering your ability to live your retirement years in the lifestyle you would like.

A key consideration on whether to draw your social security early is your honest assessment of your longevity. The break-even on whether to draw social security at 62 vs. your full retirement age is approximately 17 years, or at 79. If you wait to draw social security until 70, the break-even is approximately 82. Let's use an example of a person eligible for \$25,000 of social security at 62. If he/she waits until full retirement age of 67, that benefit would be \$35,766 and at 70 it would be \$43,720 or a difference of \$18,720 a year. In addition, your spouse would receive half of that benefit if hers/his calculated benefit is less than that. Also, keep in mind that the surviving spouse bumps up to the decedent spouse's benefit if it is higher.

**DAVID B. BLICKHAN, MBA**  
Branch Owner  
P 816.746.0080 | M 816.694.2625  
dblickhan@jcgrason.com  
www.jcgrasonkansascity.com

**J. GRASON**  
Helping Make Retirement Dreams a Reality!

The decision on when to begin drawing on social security is a personal one, yet one of the most important decisions you will make in your retirement planning. The government has tightened some loopholes on strategies to maximize your benefit but there are still options. If you would like to discuss your specific situation, please feel free to contact me at 816-746-0080 for a complimentary consultation.

Commercial advertising space is available for \$25 per annum for a business card size space (approximately 2 x 4) or \$50 per annum for a quarter page (approximately 4 x 4). These ads are also included on our website at [www.nwmomodela.com](http://www.nwmomodela.com) For more info, contact us at [nwmomodelaforclub@gmail.com](mailto:nwmomodelaforclub@gmail.com)

*The Northwest Model A Ford Club does not personally endorse or guarantee any products or services advertised in this publication*

## A - Z Model A Parts - Zanes

Ron and Sondra Kester, Owners  
787 Central Street  
Glade, Kansas 67639  
Phone: 785-543-6729  
e-mail: 2officegirls@ruraltel.net

## AMERICAN LEGION

USMC NAVY  
ARMY USAF  
COAST GUARD

Serving ALL Veterans and  
the Community



Remembering  
Those Who Served

Smithville American Legion Post 58  
P.O. Box 158  
Smithville, Missouri 64089  
(816) 532-8115

LOCATED AT:  
Hwy 92 & County Road DD

Find us on Facebook at:

<https://www.facebook.com/SmithvilleAmericanLegionPost58>



## AUTO COLOR & EQUIPMENT

524 E. 23rd Street Independence, MO 64055

### TOUCH UP Aerosols - Bottles

Computerized Color Match Available

PHONE: 816-254-5630

FAX: 916-254-5635

[www.auto-color.com](http://www.auto-color.com)

[www.bobbondart.com](http://www.bobbondart.com)

50  
YEARS



• Graphics

• Lettering

• Pinstriping

• Airbrushing

• Flames

• Gold Leafing

• Logo Designing

• Automotive Art

25612 NE Colbern Road Lee's Summit, MO  
816-554-1800 1-800 BOB BOND

## BRATTON'S ANTIQUE AUTO PARTS



800-255-1929 Phone  
[www.brattons.com](http://www.brattons.com)

800-774-1930 Fax  
1606 Back Acre Circle  
Mount Airy, MD 21771

Your source for Quality Model A Ford Parts since 1976

Tom Kautz  
Owner

[www.tomkautz.com](http://www.tomkautz.com)

## KAUTZ

Electric  
Auto Parts  
Auto Glass

Rebuilding Starters, Generators, and Alternators  
6volt - 12 volt

920 Commercial St.  
Atchison, KS 66002

Phone: (913) 367-1717

"HAVE AN 'A' DAY"



### Michael Butcher

1-888-879-6453

email: [mike@mikes-afordable.com](mailto:mike@mikes-afordable.com)  
[www.mikes-afordable.com](http://www.mikes-afordable.com)

Specialising in 1928 - 1931 Model A Ford Parts

## THE WORLD'S LARGEST SUPPLIER OF 1909-31 FORD PARTS!

Toll Free Ordering:  
**(888) 262-5712**

On-Line Ordering: [snydersantiqueauto.com](http://snydersantiqueauto.com)

Visit Our Website  
[snydersantiqueauto.com](http://snydersantiqueauto.com)  
New Products Added Daily!  
Product Installation Instructions!

# SNYDER'S

ANTIQUE AUTO PARTS

12925 Woodworth Road ♦ New Springfield, OH 44443



## FREE CATALOG

\*\$10.00 Outside the U.S., Canada and Mexico

**-Membership is Strongly Encouraged in Both of these Excellent National Organizations-**



### **Model A Ford Club of America**

**Join on line at [MAFCA.COM](http://MAFCA.COM)**

~Membership Benefits~

The *Restorer* magazine • Technical Support • Local Chapters • National Meets • Era Fashion Guidelines

• "How to Restore Series • Judging Standards

and  
Restoration Guidelines

**Optional Initiation Package**

**For New Members Only**

1—Back issue of *The Restorer*

1—MAFCA Lapel Pin

1—MAFCA Decal

Dues per year are  
U.S. Membership- \$50

Canada/Mexico Membership - \$60

International Membership - \$70

#### **New Membership**

Name \_\_\_\_\_

Spouse's Name \_\_\_\_\_

Address \_\_\_\_\_

City \_\_\_\_\_

State \_\_\_\_\_ Zip \_\_\_\_\_



### **Model "A" Restorers Club**

6721 Merriman Rd, Garden City MI 48135

(734) 427-9050 office

(734) 427-9054 fax

**Find Membership forms at <http://model-a-ford.org/>**

**2018 Dues- New or Renewals ( ) US Membership \$45.00**

( ) US Air Mail \$57.00 ( ) Canada \$55.00 ( ) International \$61.00

**New Members Only- Partial Membership:  
J/A, S/O & N/D issues only!**

( ) US Membership \$24.00 ( ) US & Canada Air Mail \$34.00 ( ) International \$42.00

**IMPORTANT:**

**Make checks payable to Model "A" Restorers Club (M.A.R.C.)**

All Memberships from outside the U.S. are to be remitted by International Money Orders in U.S. Funds (drawn on U.S. Bank) or credit card. And a personal check drawn on U.S. bank (U.S. funds must be stamped on check.)

With your membership you will receive a club membership I.D. card and the *Model "A" News*, our BI-monthly club magazine. In addition, each member is entitled to a free 40 word classified ad in each issue of our international publication, the *Model "A" News* (A good source of parts and information you may need for your car). \_\_\_\_\_

Address: \_\_\_\_\_

City: \_\_\_\_\_ State: \_\_\_\_\_ Zip: \_\_\_\_\_

I give permission to publish my phone number in the future MARC Membership Rosters:

( ) Yes ( ) No Phone: \_\_\_\_\_

I give permission to publish my email in the future MARC Membership Rosters:

( ) Yes ( ) No Email: \_\_\_\_\_

### **THE ROAD RUNNER**

% SHERRY WINKINHOFER

1459 Woodland Ave

Liberty MO 64068